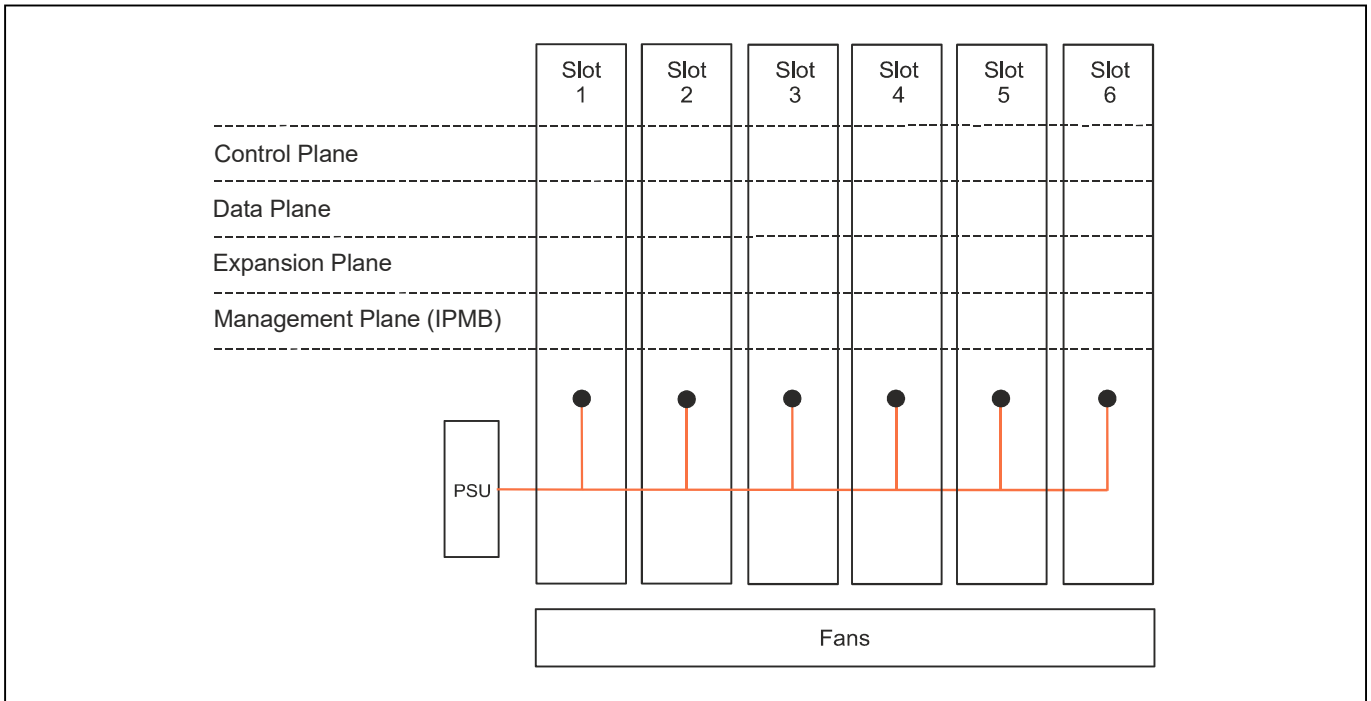
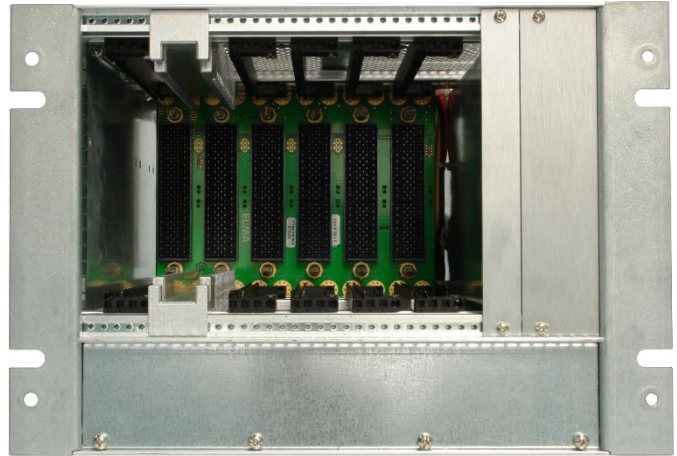


## 6-Slot 3U VPX™ Power and Ground System

### Key Features

SY TR3/526 is a ready-to-use solution for customers starting VPX™ projects based on Intel® processor boards.

- Based on popular 3U VPX form factor
- Supplied with built in AC power supply, power and ground backplane with one Meritec® cable and cooling fans
- Six slots for processor and peripheral boards
- No pre-assigned fabric connections on the backplane – all connections between VPX boards are made with Meritec® cables



**Concurrent Technologies Plc** 4 Gilberd Court, Colchester, Essex, CO4 9WN, UK  
 Tel: +44 (0)1206 752626  
**Concurrent Technologies Inc.** 400 West Cummings Park, Suite 1300, Woburn, MA 01801, USA  
 Tel: (781) 933 5900  
 email: info@gocct.com http://www.gocct.com



Ehlbeek 15a  
 30938 Burgwedel  
 fon 05139-9980-0 www.powerbridge.de  
 fax 05139-9980-49 info@powerbridge.de

## 3U VPX Development System

- 3U VPX™ Development System:
  - 6 vertically mounted 3U VPX slots
  - cooling air intake at the bottom of the system
  - air exhaust at top of the system
- VPX backplane provides:
  - 6 x slots
- Meritec 6-inch Fat Pipe Cable:
  - allows connections between modules
  - supports PCI Express Gen 3 or 10GBASE-KR connectivity
- Meritec rear housing and deployment kits to provide retention for Meritec cables
- contact your local Concurrent Technologies sales office for further details on board options

## Power Supply

- integrated 300W modular power supply:
  - +12V output (18A max)
  - -12V output (3A max)
  - +5V output (35A max, 0A min.)
  - +3.3V output (28A max, 0A min.)
  - rated power 300 Watt
  - AC 90-264V, 47Hz to 63Hz input

## Environmental Specification

- operating temperatures:
  - +5 C to +40 C (operating)
  - -25 C to +65 C (non-operating)
- relative humidity, non-condensing:
  - 20% to 90% (operating)
  - 5% to 90% (non-operating)

## Mechanical Specification

- chassis is less than 14.3lbs (6.5kg)
- 5HP (1.0-inch) backplane slot pitch supports:
  - 0.8-inch and 1.0-inch width boards
  - IEEE 1101.10 as per VITA 46.0
- chassis dimensions:
  - total chassis height is 4U
  - width 8.4-inch (214mm) x depth 11.5-inch (292mm)

## Safety

- PCBs (PWB) manufactured with flammability rating of UL94V-0

## Optional Accessories

- Meritec 6-inch Fat Pipe Cable:
  - allows connections between modules
  - supports PCI Express Gen 3 or 10GBASE-KR connectivity
- Conduction-cooled card guides:
  - allows use of conduction-cooled modules in combination with air-cooled modules