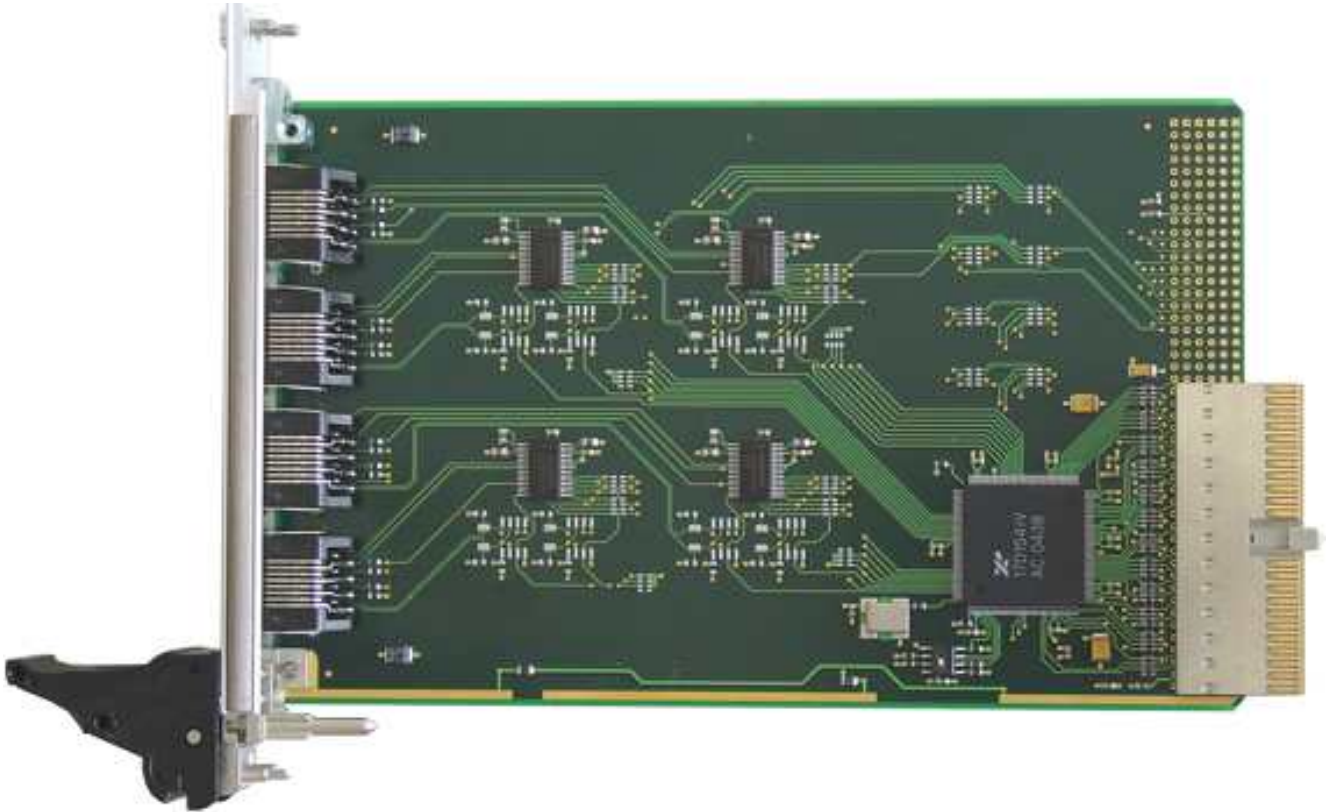


## TCP463 4 Channel Serial Interface RS232/RS422



### Application Information

The TCP463 is a standard 3U 32 bit CompactPCI module and offers 4 channels of high performance asynchronous serial interface.

Three different standard modules are available: The TCP463-10R provides 4 RS232 interfaces. The TCP463-11R provides 4 RS422 interfaces. The TCP463-12R provides 2 RS232 and 2 RS422 interfaces.

Other configurations are available as factory build option on a per channel base.

All modules offer front panel I/O with four RJ45 connectors. The TCP463-2xR modules offer additional J2 rear I/O. Each RS232 channel supports TxD, RxD, CTS, RTS, DTR, CD, DSR/RI and GND. Each RS422 channel supports RxD+/-, TxD+/- and GND on front and RxD+/-, TxD+/-, RTS+/-, CTS+/- and GND on rear I/O.

Each channel has 64 byte transmit and receive FIFOs to significantly reduce the overhead required to provide data to and get data from the transmitters and receivers. The FIFO trigger levels are programmable and the baud rate is individually programmable up to 921.6 kbps for RS232 channels and 5.5296 Mbps for RS422 channels. The UART offers readable FIFO levels.

All channels generate interrupts on CompactPCI interrupt INTA. For fast interrupt source detection the UART provides a special Global Interrupt Source Register.

All serial channels use ESD protected transceivers up to  $\pm 15\text{KV}$ .

The TCP463 can operate with 3.3V and 5.0V PCI I/O signaling voltage.

Software Support (TDRV002-SW-xx) for different operating systems is available.

**powerBridge**  
Computer

Ehlbeek 15a  
30938 Burgwedel  
fon 05139-9980-0  
fax 05139-9980-49  
www.powerbridge.de  
info@powerbridge.de

TEWS TECHNOLOGIES GmbH keeps the right to change technical specification without further notice.  
All trademarks mentioned are property of their respective owners.

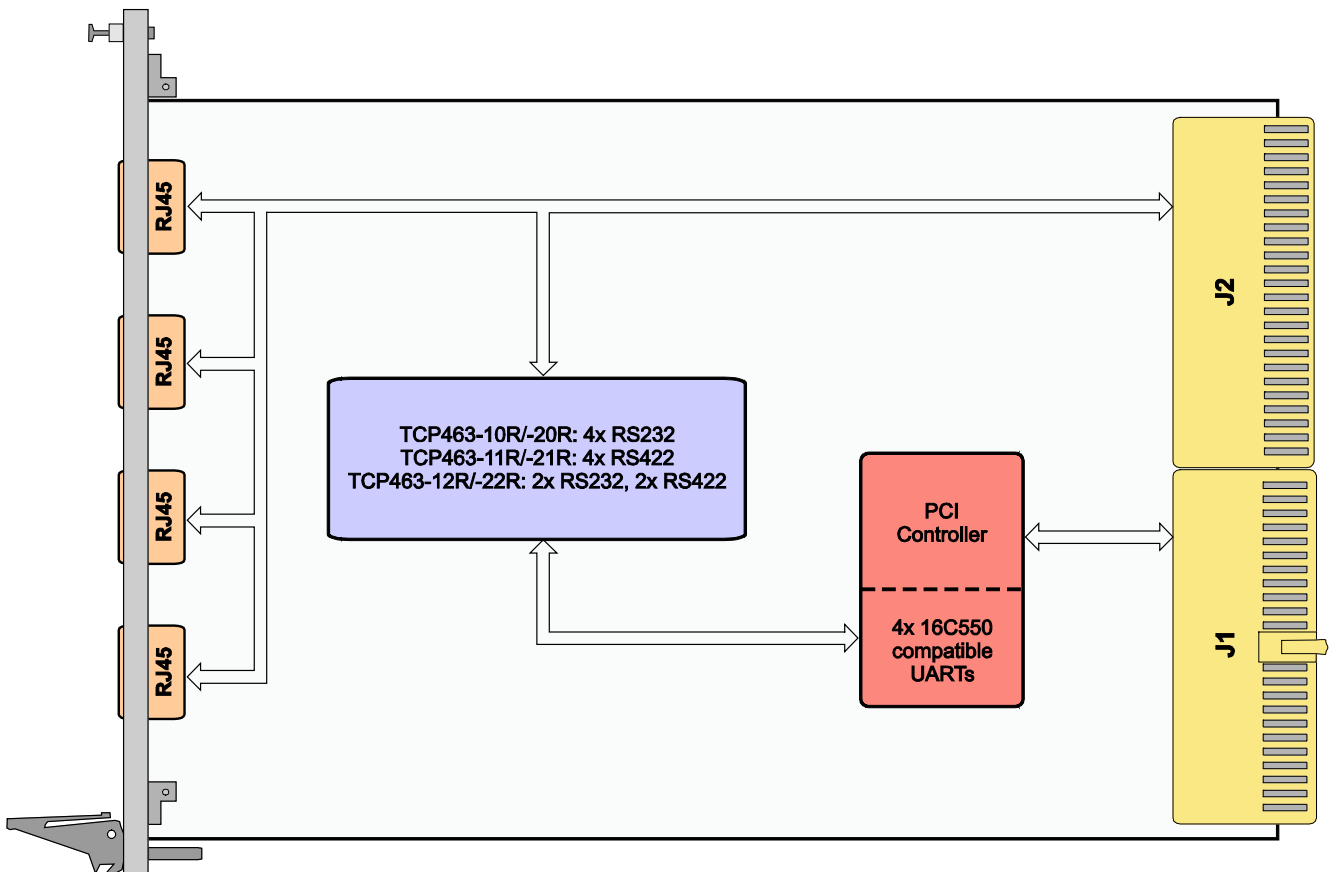
Issue 1.0.1  
2017-08-24

**TEWS TECHNOLOGIES GmbH**

Am Bahnhof 7 25469 Halstenbek, Germany  
Phone: +49 (0) 4101 4058 0 Fax: +49 (0) 4101 4058 19  
e-mail: [info@tews.com](mailto:info@tews.com) [www.tews.com](http://www.tews.com)

### Technical Information

- Standard 3U 32 Bit CompactPCI module conforming to PICMG 2.0 R3.0
  - Target Chip: XR17D154 (Exar)
  - PCI 2.3 compliant interface
  - PCI I/O signaling voltage 5V and 3.3V
- Board size: 160 mm x 100 mm
- Asynchronous serial interface
- Quad UART: Exar XR17D154
- Support of Rx/D, Tx/D, RTS, CTS, DTR, DCD, DSR/RI and GND for each RS232 channel; Rx/D+/-, Tx/D+/- and GND on front and Rx/D+/-, Tx/D+/-, RTS+/-, CTS+/- and GND on rear I/O for each RS422 channel.
- Programmable baud rates:
  - RS232: up to 921.6 kbps
  - RS422: up to 5.5296 Mbps
- 64 byte transmit FIFO per channel
- 64 byte receive FIFO per channel
- Readable FIFO levels
- Global Interrupt Source Register
- General Purpose 16 bit Timer/Counter
- ESD protected transceiver (up to ± 15KV)
- Operating temperature -40°C to +85°C



### Order Information

#### RoHS Compliant

<b>TCP463-10R</b>	4 Channel Serial RS232, RJ45
<b>TCP463-11R</b>	4 Channel Serial RS422, RJ45
<b>TCP463-12R</b>	2 Channel Serial RS232, 2 Channel Serial RS422, RJ45
<b>TCP463-20R</b>	4 Channel Serial RS232, RJ45 and J2 I/O
<b>TCP463-21R</b>	4 Channel Serial RS422, RJ45 and J2 I/O
<b>TCP463-22R</b>	2 Channel Serial RS232, 2 Channel Serial RS422, RJ45 and J2 I/O

Other configurations are available as factory option on a per channel base.

For the availability of non-RoHS compliant (lead solder) products please contact TEWS.

#### Documentation

<b>TCP463-DOC</b>	User Manual
-------------------	-------------

#### Software

<b>TDRV002-SW-25</b>	Integrity Software Support
<b>TDRV002-SW-42</b>	VxWorks Software Support (Legacy and VxBus-Enabled Software Support)
<b>TDRV002-SW-65</b>	Windows Software Support
<b>TDRV002-SW-82</b>	Linux Software Support
<b>TDRV002-SW-95</b>	QNX Software Support

For other operating systems please contact TEWS.

#### Accessories

<b>TCP001-FP</b>	6U Front Panel Extension for 3U cPCI Boards
------------------	---