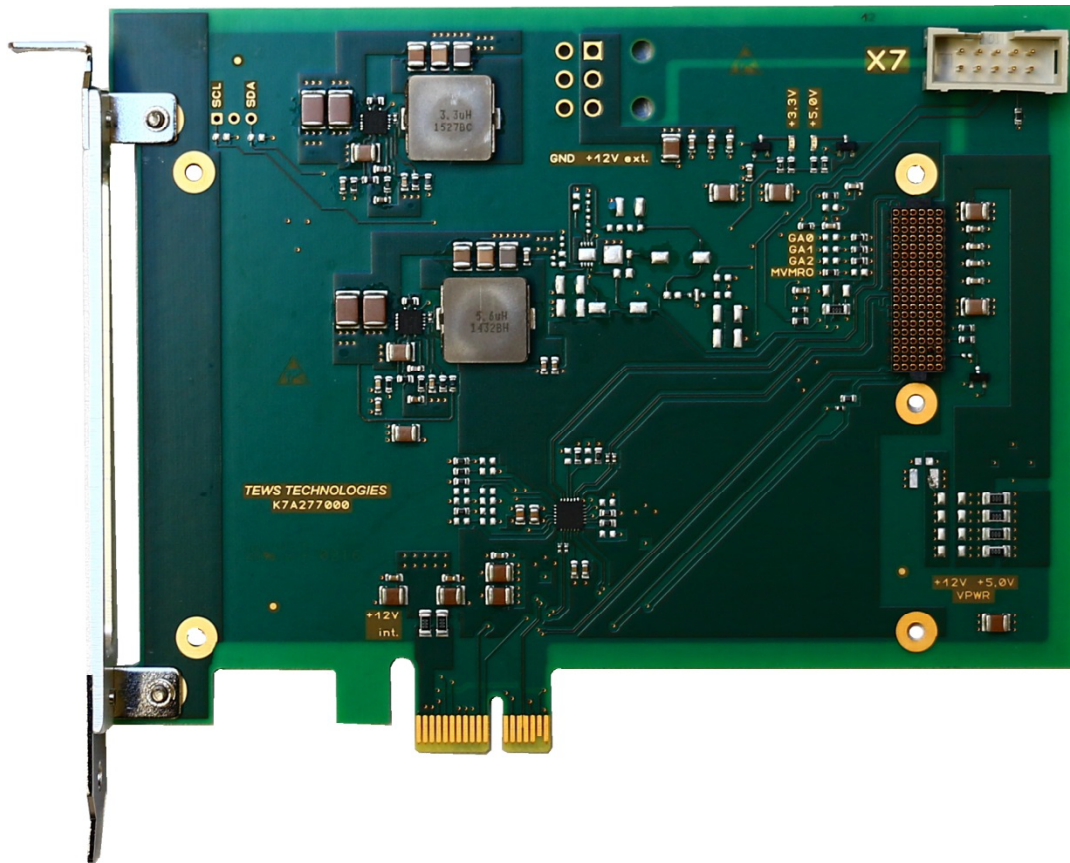


TPCE277 PCI Express x1, Gen3 XMC Carrier



TPCE277-10R

Application Information

The TPCE277 is a standard height PCI Express Revision 3.0 compatible module that provides one slot for a single-width XMC module used to build modular, flexible and cost effective I/O solutions for all kinds of applications like process control, medical systems, telecommunication and traffic control.

The TPCE277 is a versatile solution to upgrade well known XMC I/O solutions to the PCI Express signalling standard.

The PCI Express x1 link from the host board to the XMC module is improved by a PCIe Gen3 Redriver, allowing safe operation of XMC modules on PCIe mainboards.

VPWR is selectable via order option. The TPCE277-x0R variants provide for 12V VPWR and the TPCE277-x1R order options provide 5V VPWR.

The TPCE277 supports XMC front panel I/O.

The PCIe edge card connector provides +12V and +3.3V. The TPCE277-1xR uses the +12V of the PCIe edge card connector to generate all power supply voltages for the XMC slot (+3.3V, VPWR and +12V). According to the PCIe specification, a PCIe x1 card is limited to 6W on the +12V which allows to operate many of the available XMC modules on the TPCE277-1xR.

For increased power requirements of an XMC module, the TPCE277-2xR offer a PCIe Graphics Power Connector to supply the +12V for generating all the power supply voltages for the XMC slot providing power of up to 25W.

A 10-pin JTAG header is available for XMC module debugging purposes. All five JTAG signals are routed directly to the XMC slot.

TEWS TECHNOLOGIES GmbH keeps the right to change technical specification without further notice.
All trademarks mentioned are property of their respective owners.

TEWS TECHNOLOGIES GmbH

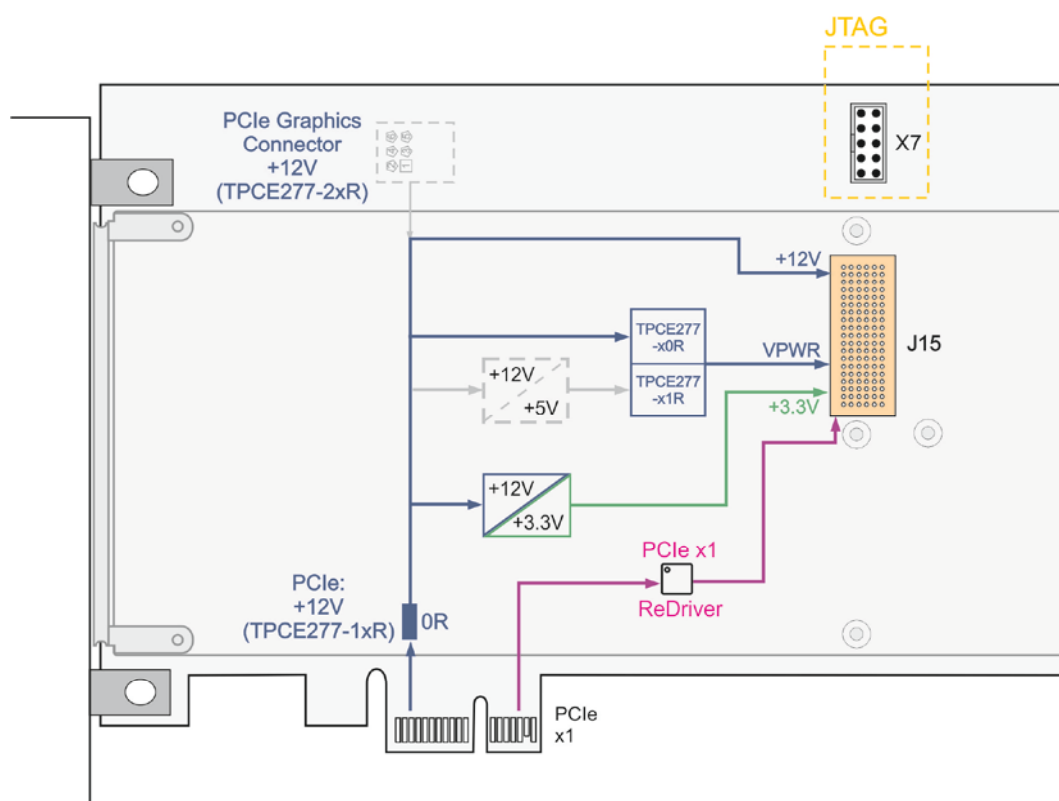
Am Bahnhof 7 25469 Halstenbek, Germany
Phone: +49 (0) 4101 4058 0 Fax: +49 (0) 4101 4058 19
e-mail: info@tews.com www.tews.com

powerBridge
Computer

Ehlbeek 15a
30938 Burgwedel
fon 05139-9980-0
fax 05139-9980-49
www.powerbridge.de
info@powerbridge.de

Technical Information

- Form Factor: PCI Express x1, Revision 3.0
 - Board size: approx. 143mm x 111mm
- One XMC Slot:
 - PCIe Interface: x1, Rev. 3.0
 - XMC Front Panel I/O
- All XMC Power Supplies generated from +12V
 - TPCE277-1xR: +12V from PCIe edge card connector
 - TPCE277-2xR: +12V from PCIe Graphics Power Connector
- JTAG:
 - 10-pin header with all five JTAG signals routed to XMC connector
- Operating temperature: -40°C to +85°C
- MTBF (MIL-HDBK217F/FN2 G_B 20°C):
 - TPCE277-10R: 1764000h
 - TPCE277-11R: 1631000h
 - TPCE277-20R: 1288000h
 - TPCE277-21R: 1216000h



Order Information

RoHS Compliant

- | | |
|--------------------|---|
| TPCE277-10R | 1 Slot XMC Carrier, PCIe x1, VPWR = 12V, 12V from PCIe connector |
| TPCE277-11R | 1 Slot XMC Carrier, PCIe x1, VPWR = 5V, 12V from PCIe connector |
| TPCE277-20R | 1 Slot XMC Carrier, PCIe x1, VPWR = 12V, 12V from PCIe Graphics connector |
| TPCE277-21R | 1 Slot XMC Carrier, PCIe x1, VPWR = 5V, 12V from PCIe Graphics connector |

For the availability of non-RoHS compliant (lead solder) products please contact TEWS.

Documentation

TPCE277-DOC User Manual